

CATALOGO DE BATAS ESD *(Antiestáticas)*

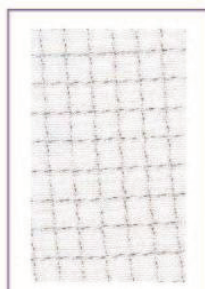


Manzaneros No.1916 Col. Sandra Lucia C.P. 32530 Cd. Juárez. Chih.

Tel. (656) 142-0370 Fax 558 2076 E-mal: auillermo@comeratz.com www.comeratz.com



GTZ 66322



GTZ 66322 W



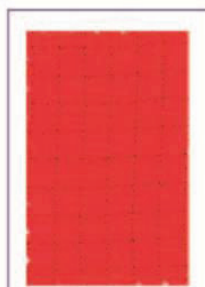
GTZ 66322 NSB



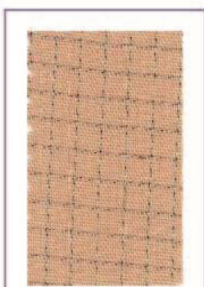
GTZ 66322 RB



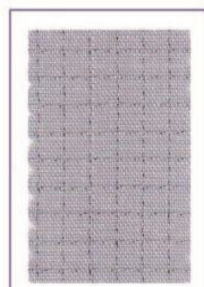
GTZ 66322 NV



GTZ 66322 O



GTZ 66322 KY



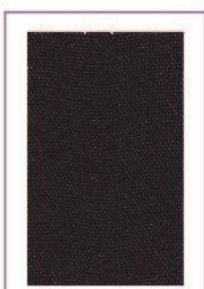
GTZ 66322 GY



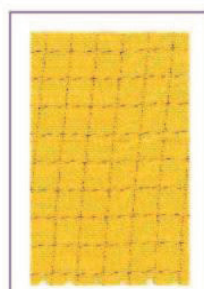
GTZ 66322 TL



GTZ 66322 BG



GTZ 66322 BK



GTZ 66322 Y





Characteristics / Características	Method	Método Méx	Unit / Unidad	Specification Especificación	
Composition	ASTM D-629	NMX-A-084	%	66% polyester / poliéster 32% cotton / algodón 2% carbon fiber / fibra de carbón	
Weave	Visual	Visual		Plain / Tafetán	
Width	ASTM D-3774	NMX-A-052	inches	63* / 61** +/- 1	
			cm	160* / 155** +/- 2.5	
Weight	ASTM D-3776	NMX-A-072	oz / yd ²	4.3 +/- 5%	
			g / m ²	145 +/- 5%	
Breaking strength	ASTM D-5034	NMX-A-059	warp / urdimbre	Newton	min 440
			werf / trama	Newton	min 350
Tear strength	ASTM D-1424	NMX-A-109	warp / urdimbre	Newton	min 30
			werf / trama	Newton	min 20
Dimensional change	AATCC-135	NMX-A-158	warp / urdimbre	%	+/- 3%
			werf / trama	%	+/- 3%
Colorfastness to washing	AATCC-61	NMX-A-074	change / cambio	3 - 4	
Colorfastness to perspiration	AATCC-15	NMX-A-065	acid / ácido	3 - 4	
			alkaline / alcalino	3 - 4	
Colorfastness to crocking	AATCC-08	NMX-A-073	dry / seco	3 - 4	
			wet / húmedo	2 - 3	
Surface resistivity (12%) RH 73 °F, 48 hrs.	Resistividad superficial (12%) RH 22.55 °C, 48 hrs.	ESD STM 2.1	Resistance Ohms Resistencia Ohms	max 10 ⁶	
Surface resistivity after 100 washing cycles	Resistividad superficial después 100 lavados	ESD STM 2.1		max 10 ⁶	
Static decay (12%) RH 73 °F, 48 hrs.	Caída de estática (12%) RH 22.55 °C, 48 hrs.	FED STD 101C METHOD 4046	seconds / segundos	max 0.01	
Static decay after 100 washing cycles	Caída de estática después de 100 lavados				

* Width for white / Ancho para blanco
** Width for colors / Ancho para colores